

POWERFAB 180C CRAWLER EXCAVATOR

1.2 TON DIGGING FORCE



2.3M DEPTH OF DIG

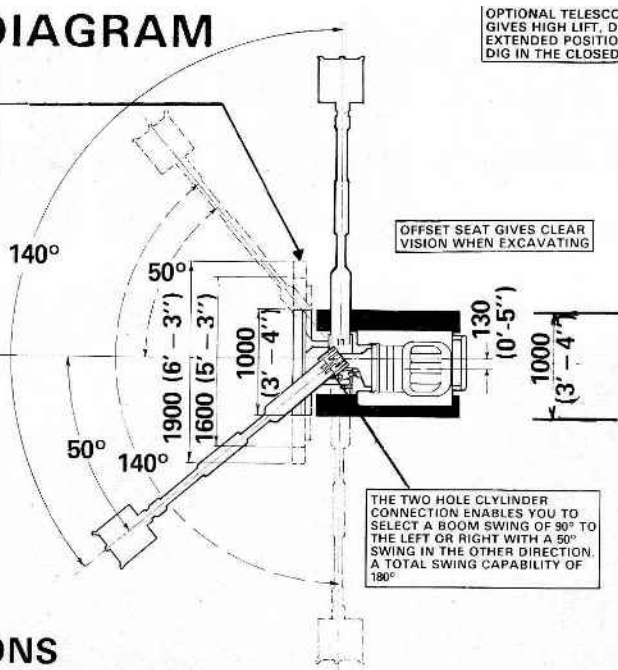


180° BOOM SLEW

- LIGHT WEIGHT 0.88 TONNE
- CAN TOW A TRAILER OVER ROUGH AND INCLINED GROUND
- TELESCOPIC DOZER BLADE FOR INCREASED SIDE STABILITY
- ALL ROUND EASY ACCESS FOR SERVICING AND MAINTENANCE
- WORKS IN CONFINED SPACE
- AIR COOLED PETROL ENGINE. DIESEL OR WATER COOLED DIESEL ENGINES OPTIONAL
- HPTO WILL POWER HYDRAULIC IMPLEMENTS INCLUDING BREAKERS, SAWS, PUMPS, ETC
- REINFORCED RUBBER TRACKS

180° SLEW DIAGRAM

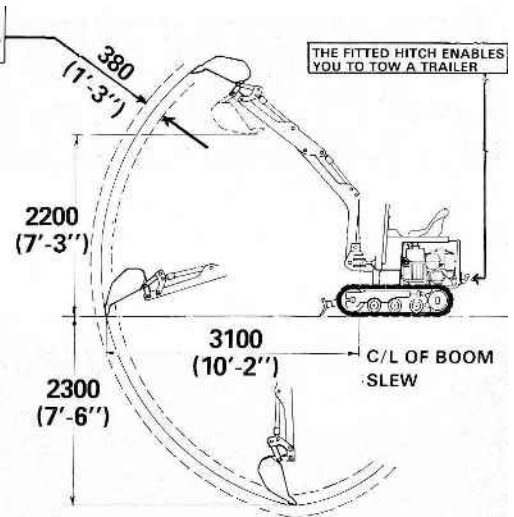
1.0M WIDE BULLDOZER BLADE WITH TELESCOPIC EXTENSIONS TO GIVE OVERALL MAXIMUM WIDTH OF 1.9M. THE EXTENSIONS PRODUCE INCREASED STABILITY WHEN OPERATING OVER THE SIDE



OPTIONAL TELESCOPIC DIPPER GIVES HIGH LIFT, DEEP DIG IN EXTENDED POSITION AND HARD DIG IN THE CLOSED POSITION

OFFSET SEAT GIVES CLEAR VISION WHEN EXCAVATING

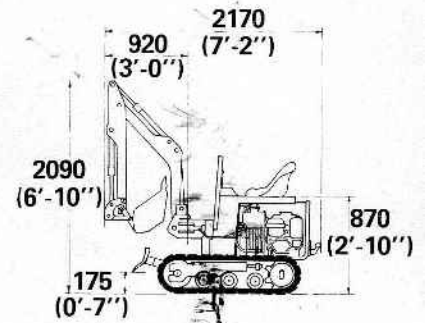
THE TWO HOLE CYLINDER CONNECTION ENABLES YOU TO SELECT A BOOM SWING OF 90° TO THE LEFT OR RIGHT WITH A 50° SWING IN THE OTHER DIRECTION. A TOTAL SWING CAPABILITY OF 180°



OPERATING DIAGRAM

SPECIFICATIONS

ITEM	DESCRIPTION	TECHNICAL DATA
ENGINE	Honda (Standard)	11 H.P. Air Cooled Petrol
	Yanmar (Optional)	9.0 H.P. Air Cooled Diesel
	Mitsubishi (Optional)	15 H.P. Water Cooled Diesel
PERFORMANCE	Gradeability	58% (30°)
	Boom Swing Angle	180°
	Travelling Speed	1.76 Km/Hr (1.1 mph)
	Ground Contact Pressure	0.23 Kg cm ²
	Digging Force	1.2 Ton
BUCKET	Standard Bucket	Capacity Width 0.045 M ³ 400 mm
	Deep Bucket	Capacity Width 0.052 M ³ 400 mm
HYDRAULIC H.P.T.O.	Pump Flow	21 L.P.M.
	H.P.T.O. Operating Pressure	138 bar
	Main Line Relief Pressure	186 bar
UNDERCARRIAGE	Track Width	Reinforced Rubber 200 mm
	Number of Rollers	3 per Track
DOZER BLADE	Standard Width & Height	1000 x 230
	With Telescopic Extn	
	Max Width	1900
	Min Width	1600
SHIPPING DIMENSIONS	Lift and Drop	Lift 175 Drop 385
	Length x Width x Height	2.2m x 1m x 2.1m
MASS	Operating Weight	0.88 Tonne



MAJOR DIMENSIONS

BUCKETS

A RANGE OF EXCAVATOR BUCKETS ARE AVAILABLE IN WIDTHS RANGING FROM 200mm TO 600mm

SPECIAL PURPOSE ATTACHMENTS INCLUDING GRABS, FACE SHOVELS, GRAVE DIG BUCKETS AND MATERIAL HANDLING BUCKETS ARE ALSO AVAILABLE

ANCILLARY EQUIPMENT

THE OPTIONAL H.P.T.O. CONNECTIONS ENABLE YOU TO POWER A RANGE OF HYDRAULICALLY OPERATED IMPLEMENTS INCLUDING HAND AND MACHINE HELD BREAKERS, CIRCULAR AND CHAIN SAWS, DRILLS, POLE HOLE BORERS, BRUSHES, WATER PUMPS, PRUNERS ETC

Due to our policy of continual improvement, we reserve the right to amend design or specifications without prior notice.

POWERFAB

SALES & SPARES LIMITED

FAIR VIEW, ASHVALE,
TREDEGAR, GWENT NP2 3HA
UNITED KINGDOM.
TELEPHONE: 049525 - 6627.
TELEX: 498973 POWFAB G.
FAX: 0495 - 718162

For further information contact our Sales Dept. at the address given below.

Your Powerfab Distributor.