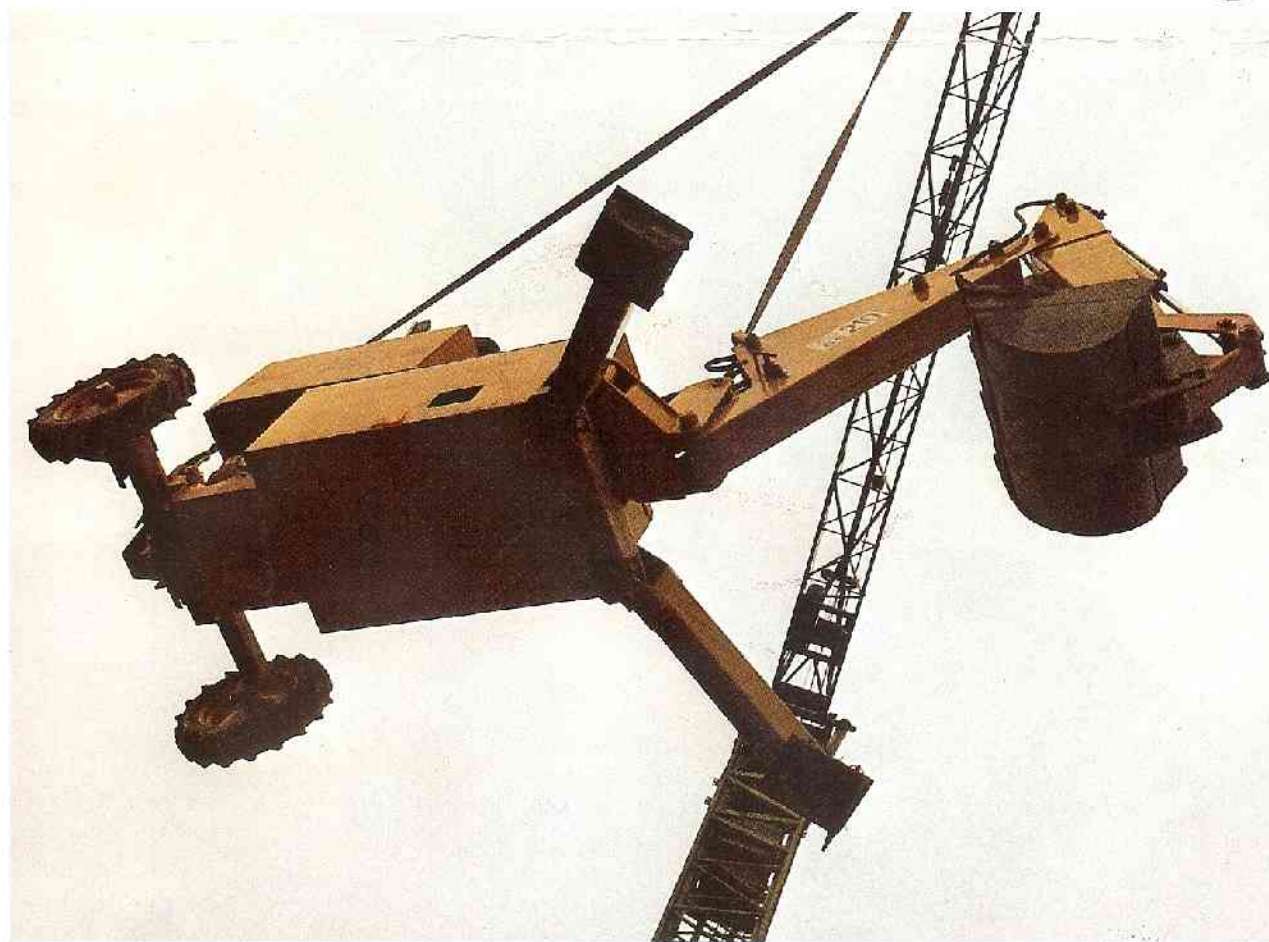


MINI **GIGANT**®

GS 210

The Mini-excavator for you!

***Small in stature
big in performance***

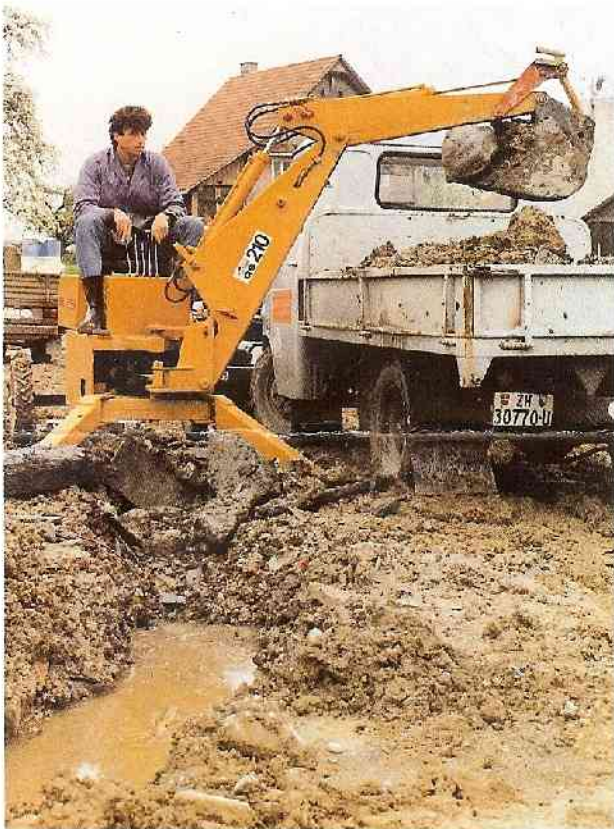


Not only does it fly, it also digs, demolishes etc. etc.

No problems digging foundations can be lifted out by crane

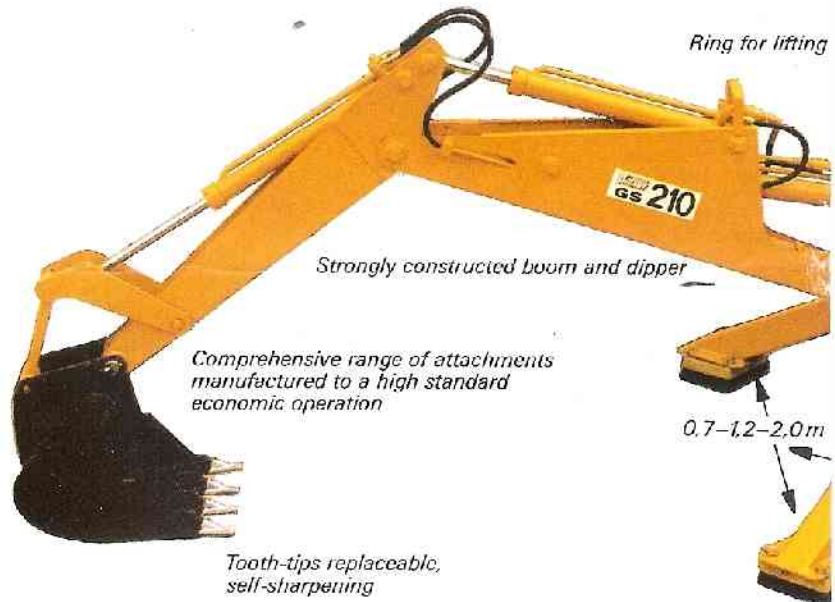


Minigigant for all continents!



Max. load over height 2.3 m
No problem loading trucks

MINI
GIGANT.



Ideal for digging close to walls



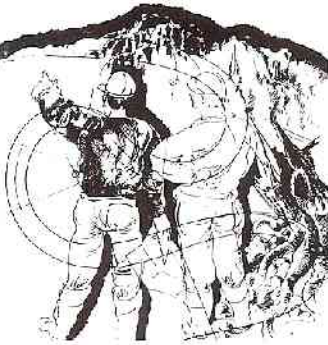
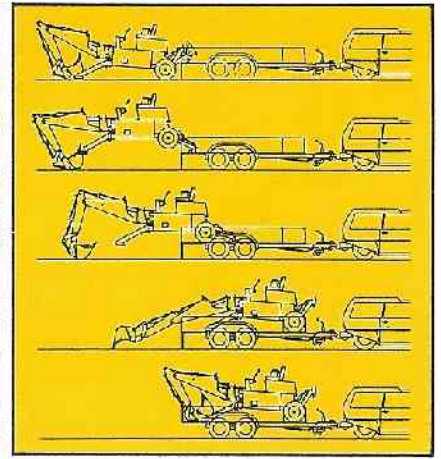
Steel pads can be replaced by rubber pads quickly without tool.
Surface protection



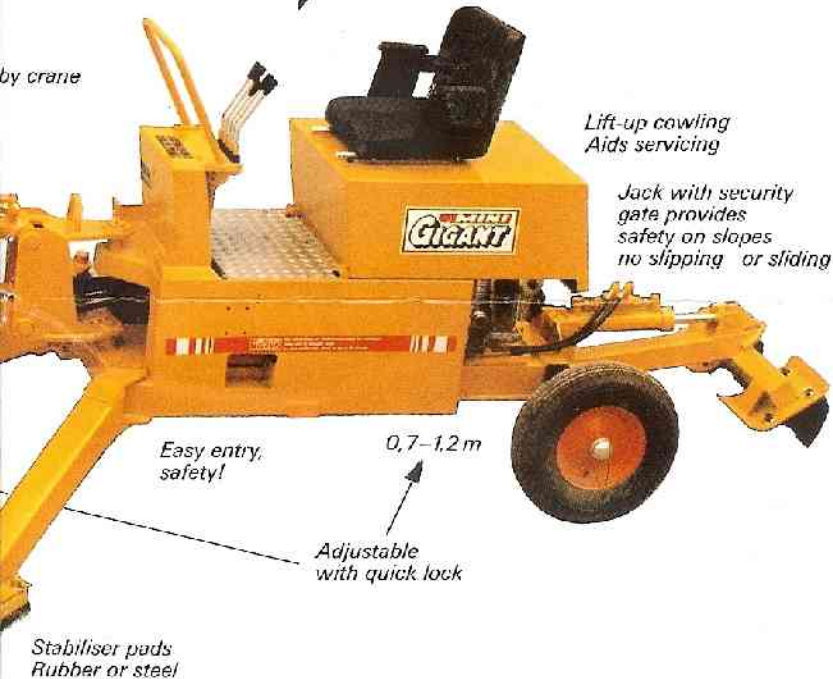
Transportations

Self loading and off-loading

Swiss know-how for all continents



by crane



Lift-up cowling
Aids servicing

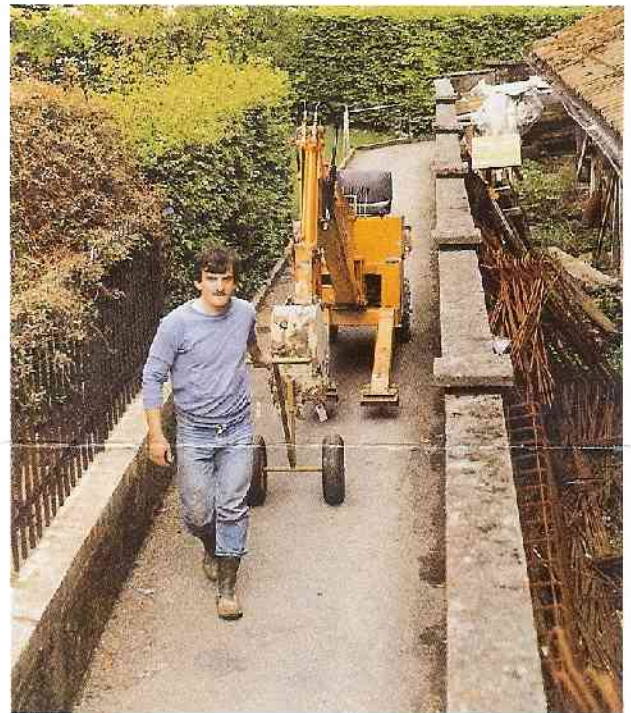
Jack with security gate provides safety on slopes no slipping or sliding

Easy entry, safety!

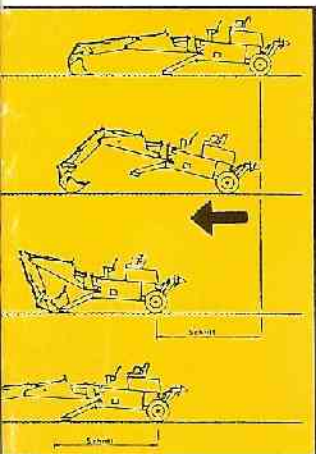
0,7-1,2 m

Adjustable with quick lock

Stabiliser pads
Rubber or steel



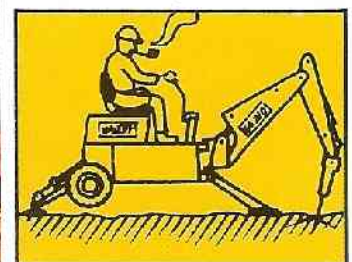
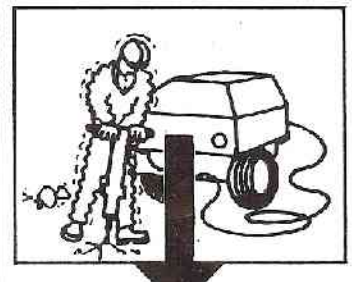
Easily moved by one man
Machine only 28" wide



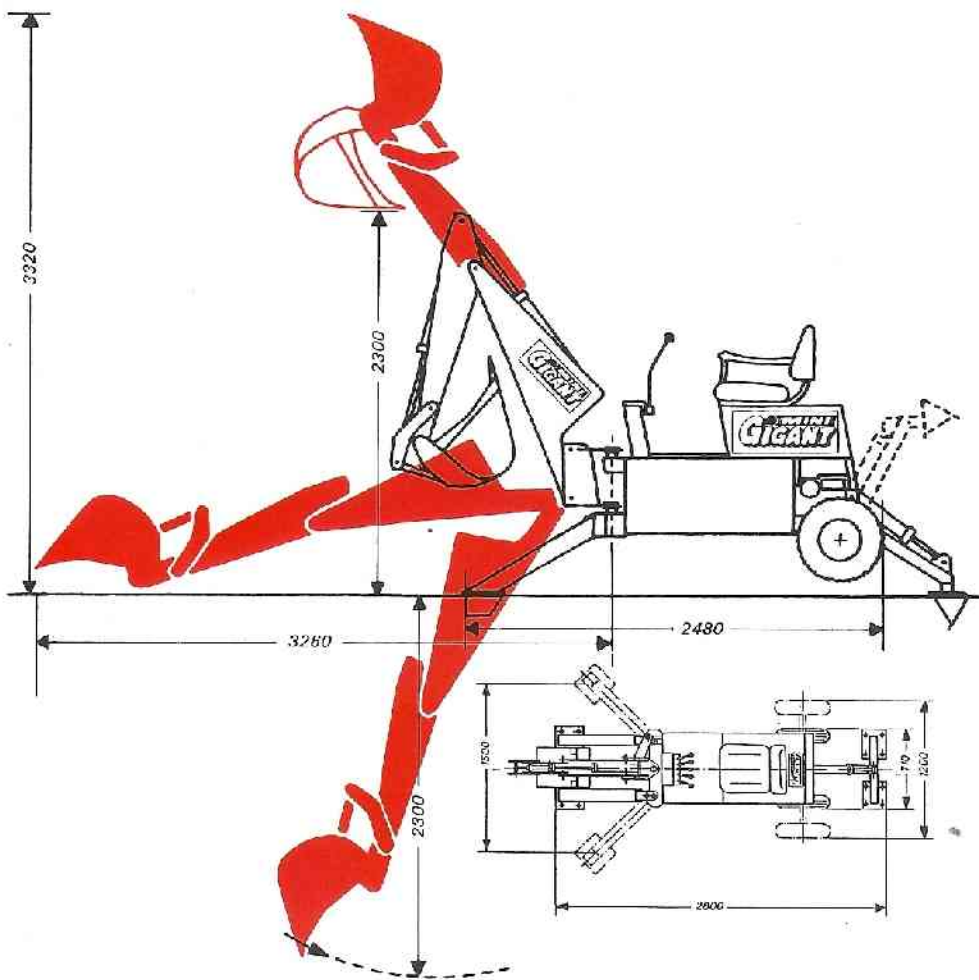
Self-powered movement



Power options: Honda petrol
Kubota diesel
Electric motor
Honda gas



Hydraulically operated tools and hammer can be connected



Engine:

petrol 10 HP/7,35 kW
Honda standard

Options:

Electric 380 V, 7,5 HP/5,5 kW,
10 A

Diesel Kubota water-cooled,
7 HP/5,2 kW with electric start

Gas-Honda 10 HP/7,35 kW

- weight of GS 210 standard 670 kg
- digging depth 2300/2400 mm
- load-over height 2300/2400 mm
- max. working height 3300/3400 mm
- reach at ground level 3260 mm
- break force
 - at cylinder 4t
 - at teeth 1,6 t
- slew 150°

Hydraulics

- delivery 16/18 l
- system pressure 160/170 bar
- hydraulic volume 45 l

Boom lift force 205 kg at 2400 mm
355 kg at 1500 mm

Boom tractive force 410 kg at 2400 mm
630 kg at 1500 mm

Backhoe dipper
widths 220/260/300/400/500 mm

Backhoe dipper with ejector
widths 220/260/300/400 mm

Clay bucket/drainage bucket
widths 220/260 mm

Loading bucket
width 600 mm

Ditch cleaning bucket
widths 850/1000 mm

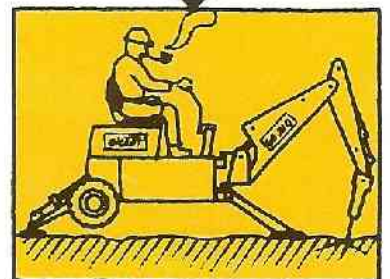
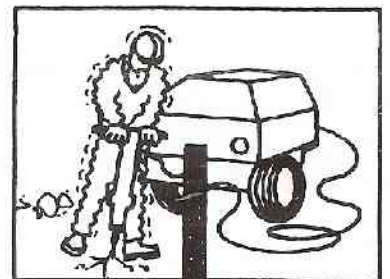
Clamshell

Adjustable verge bucket
width 850 mm

Minigiant (Europe) Ltd.

Distribution Center:

Hirsackerstrasse 32
CH-8810 Horgen, Switzerland
Telephone: 01-725 19 89
Telex: 54726 bauh ch Telefax: 01 725 77 20



Hydraulik breaker + chisel